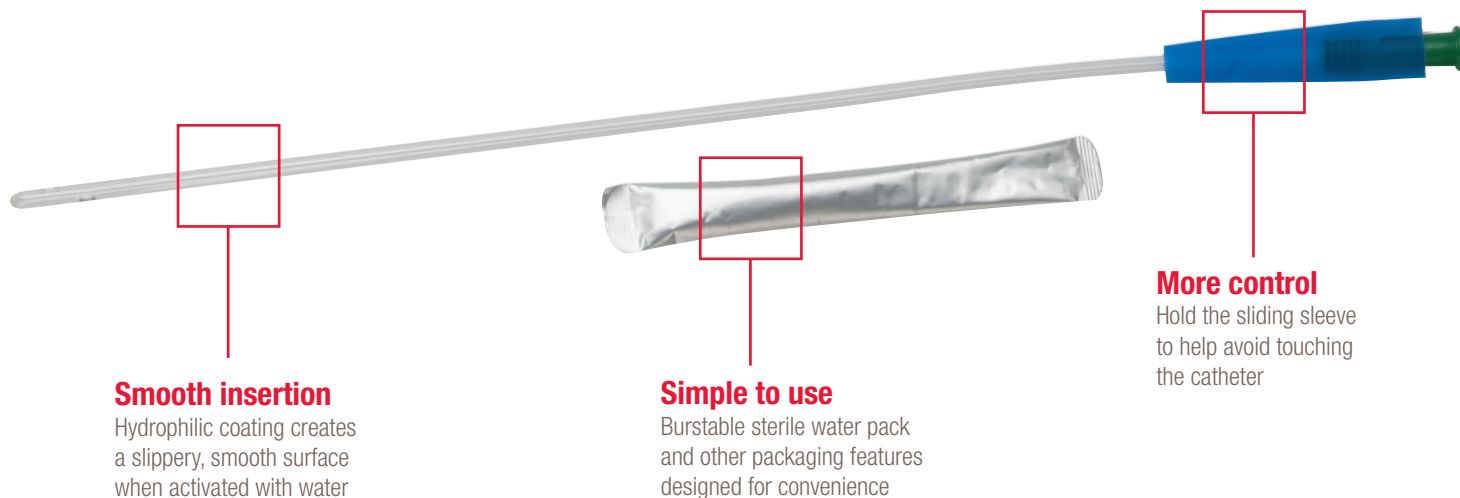


Part of the  
**Apogee Essentials**  
Line of  
Intermittent Catheters

## Apogee HC

### Hydrophilic Intermittent Catheter



#### People First: Jana Greifswald

*"You should simply indulge yourself now and then – and do things you would otherwise never think of doing!"*

A simple to use catheter designed to provide smooth insertion for those seeking a more comfortable catheterization experience. This catheter is designed to be well lubricated and easy to use and offers added control with a sliding sleeve to help avoid touching the catheter.



## Apogee HC

### Hydrophilic Intermittent Catheter

#### Smooth insertion

- Water binds to the **hydrophilic coating** over the catheter, creating a **slippery, smooth surface**
- Smooth eyelets aid comfortable insertion and removal

**More control** - hold the **sliding sleeve** wherever you need, **to help avoid touching the catheter**

#### Simple to use

- **Large finger holes** for opening package, no matter level of dexterity
- **Burstable sterile water pack**, activates the catheter coating
- **Adhesive tab** to attach to a vertical surface, keeping your hands free while preparing to catheterize



#### Apogee Essentials Line Apogee IC Intermittent Catheters

- Same *trusted quality* from a company you know
- Same *Apogee catheter comfort* you expect
- More affordable

#### Flexible Funnel

- Enhanced grip helps promote easier handling
- Guide notch indicates coude tip position



Stock No.	Size	Length (inches)	Tip	Box Qty.
91006	10 Fr	6	Straight	30
91206	12 Fr	6	Straight	30
91406	14 Fr	6	Straight	30
90810	8 Fr	10	Straight	30
91010	10 Fr	10	Straight	30
91216	12 Fr	16	Straight	30
91416	14 Fr	16	Straight	30
91616	16 Fr	16	Straight	30
91816	18 Fr	16	Straight	30
91226	12 Fr	16	Coudé	30
91426	14 Fr	16	Coudé	30
91626	16 Fr	16	Coudé	30



#### Hollister Incorporated

2000 Hollister Drive  
Libertyville, IL USA  
[www.hollister.com](http://www.hollister.com)

**For detailed clinical questions  
concerning our products:**

1.888.740.8999

For orders only: 1.800.323.4060

For information visit

[www.hollisterpeoplefirst.com](http://www.hollisterpeoplefirst.com)

The Hollister logo, Apogee Essentials  
and Apogee HC are trademarks of  
Hollister Incorporated.

©2014 Hollister Incorporated.  
922607-0914

Do not use if package is damaged.

**WARNING:** Single use. If fever, blood in urine, discomfort or sign of trauma occurs, immediately stop using & call healthcare practitioner.

**Precaution:** Use only after being trained by a qualified healthcare practitioner in proper preparation, insertion, & removal of this product.

**Rx Only.** Federal (USA) Law restricts this device to sale by or on the order of a physician or other healthcare practitioner licensed under state law to order this product.